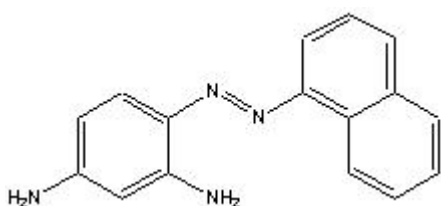


## TECHNICAL INFORMATION

Catalog Number: 158035  
**Fat brown RR**

**Structure:**



**Molecular Formula:** C<sub>16</sub>H<sub>14</sub>N<sub>4</sub>

**Molecular Weight:** 262.31

**CAS # :** 6416-57-5

**Synonyms:** Solvent brown 1; C.I. 11285

**Physical Appearance:** Red brown powder

**Availability:**

Catalog #	Description	Size
158035	Red brown powder	25 gm

**Solubility:** Soluble in acetone, toluene, ethanol, EGME