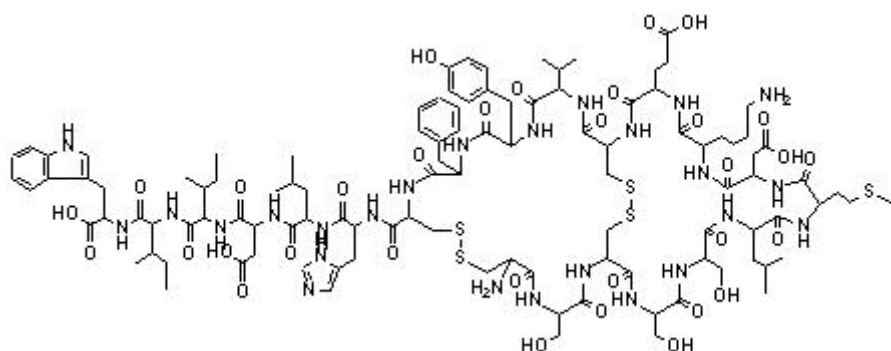


TECHNICAL INFORMATION

Catalog Number: 153092
Endothelin-1

Structure:



Molecular Formula: C₁₀₉H₁₅₉N₂₅O₃₂S₅

Molecular Weight: 2491.9

CAS # : 117399-94-7

Sequence: Cys-Ser-Cys-Ser-Ser-Leu-Met-Asp-Lys-Glu-Cys-Val-Tyr-Phe-Cys-His-Leu-Asp-Ile-Ile-Trp; Contains disulfide bonds between Cys¹ and Cys¹⁵ and between Cys³ and Cys¹¹

Peptide Purity: ~99.0%

Solubility: Soluble in water (1 mg/ml), 20% ACN in H₂O or 1 mg/ml 0.1% TFA

Physical Appearance: White powder

Peptide Content: ~80%

Counter ION: TFA

Crosses with: human, porcine, canine, rat, mouse, bovine

Description:

This 21-amino acid peptide from vascular endothelial cells of different mammalian species is one of the most potent vasoconstrictors. Endothelin 1 exerts a wide variety of effects on both vascular and non-vascular (e.g. heart, lung, brain) tissues. Toxic peptides from a snake venom, the sarafotoxins, show structural and functional homology to Endothelin-1.

References:

- Andersen, N.H., et al., "Conformational Isomerism of Endothelin in Acidic Aqueous Media: A Quantitative NEOSY Analysis" *Biochemistry*, v. **31**, 1280-1295 (1992).
- Yanagisawa, M., et al., *Nature*, v. **332**, 411 (1988).
- Itoh, Y., et al., *FEBS Lett.*, v. **231**, 440 (1988).
- Yanagisawa, M and Masaki, T., *Biochem. Pharmacol.*, v. **38**, 1877 (1989).
- Masaki, T., *J. Cardiovasc. Pharmacol.*, v. **13** (Suppl. 5), S1 (1989).
- Simonson, M.S. and Dunn, M.J., *FASEB J.*, v. **4**, 2989 (1990).
- Lerman, A., et al., *Mayo Clin. Proc.*, v. **65**, 1441 (1990).

- Rubanyi, G.M. and Parker-Botelho, L.H., *FASEB J.*, v. **5**, 2713 (1991).
- Hahn, A.W.A., et al., *J. Cardiovasc. Pharmacol.*, v. **22** (Suppl. 5), S37 (1993).