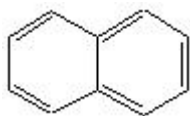


## TECHNICAL INFORMATION

Catalog Number: 151726  
**Naphthalene scintillation grade**

**Structure:**



**Molecular Formula:** C<sub>10</sub>H<sub>8</sub>

**Molecular Weight:** 128.17

**CAS # :** 91-20-3

**Physical Description:** White crystalline powder

**Purity:** ≥ 99%

**Solubility:** Soluble in hydronaphthalenes, ether, carbon disulfide, chloroform, carbon tetrachloride, benzene, toluene, ethanol, methanol (100 mg/ml-clear, colorless solution); insoluble in water

**Reference:**

– *Merck Index, 12th Ed.*, No 6457